

Air Force Civil Engineer Center



Pease RAB Meeting

Former Pease AFB, NH

09 June 2021

Battle Ready... Built Right!



Agenda

- **Welcome, Introduction, RAB Business** – Ona Ferguson (Consensus Building Institute)
- **Air Force Cleanup Update** – Val De La Fuente (AFCEC)
- **Open Discussion Time**
- **Drinking Water Update** – Brian Goetz (City of Portsmouth)
- **Public Comments**
- **Meeting recap and Next Steps** – Ona Ferguson (Consensus Building Institute)
- **Adjourn**



Public Comment

Goal: Provide opportunity for members of the public to comment.

Process:

- Public members e-mail Linda Geissinger by 5:20 PM ET if you would like to make public comment:
linda.geissinger@us.af.mil
- 3 min limit per speaker.
- Speakers will be notified when they have 30 seconds remaining & at the 3 min mark.

Air Force Civil Engineer Center



**Remedial Investigation
Update**

Former Pease AFB, NH

09 June 2021

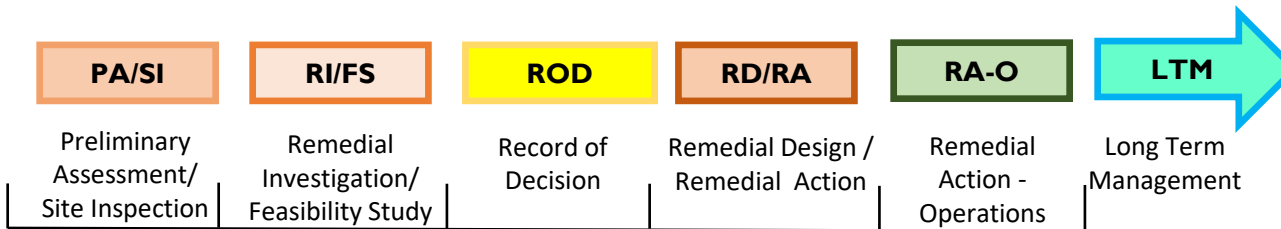


CERCLA Overview

Conceptual Overview of the Process



CERCLA Nomenclature used to describe the Conceptual Process Above



Field Work Begins Spring 2021



Remedial Investigation (RI) Update

- RI Work Plan finalized on April 30th following USEPA and NHDES approval
- Field Work began May 3rd
 - First sampling focuses on soil in known and potential source areas, soil-groundwater transport, groundwater, sediment, surface water, and storm water
 - RI is iterative and follow-on sampling expected to include:
 - ❖ Biota Sampling
 - ❖ Data gaps
- Risk Assessment work plans are draft status - human health is in USEPA and NHDES review



RI Field Work – Completed and Ongoing Activities

Completed and Ongoing Activities

Direct push soil investigation

- 9 Areas

Packer sampling

- 4 Locations

Seep sampling

- 22 Locations

Brook surface water/sediment sampling (*ongoing*)

- 11 Locations

Private property surface water/sediment sampling

- 3 Locations

Shallow groundwater/hydric soils sampling (*ongoing*)

- 5 Locations

Boundary well groundwater sampling (*ongoing*)

- 31 locations

Runway area surface soil sampling

- 6 locations

Public Question & Answer Session Held May 19th

- Slides available on the Pease BRAC website:
<https://www.afcec.af.mil/LinkClick.aspx?fileticket= MU4ICJxjDY%3d&portalid=17>



RI Field Work – Upcoming Activities

Planned Activities in Summer 2021

- Storm water reconnaissance and sampling,
- Zone 2, landfill 5, landfill 6 existing well GW sampling,
- 1961 crash area soil sampling,
- Lysimeter installation,
- Private property well sampling, and
- Monitoring well installation





Remedial Investigation Timeline

Field work for the Remedial Investigation:

- Started in May 2021
- Will continue into Fall 2021
- May continue in Spring 2022

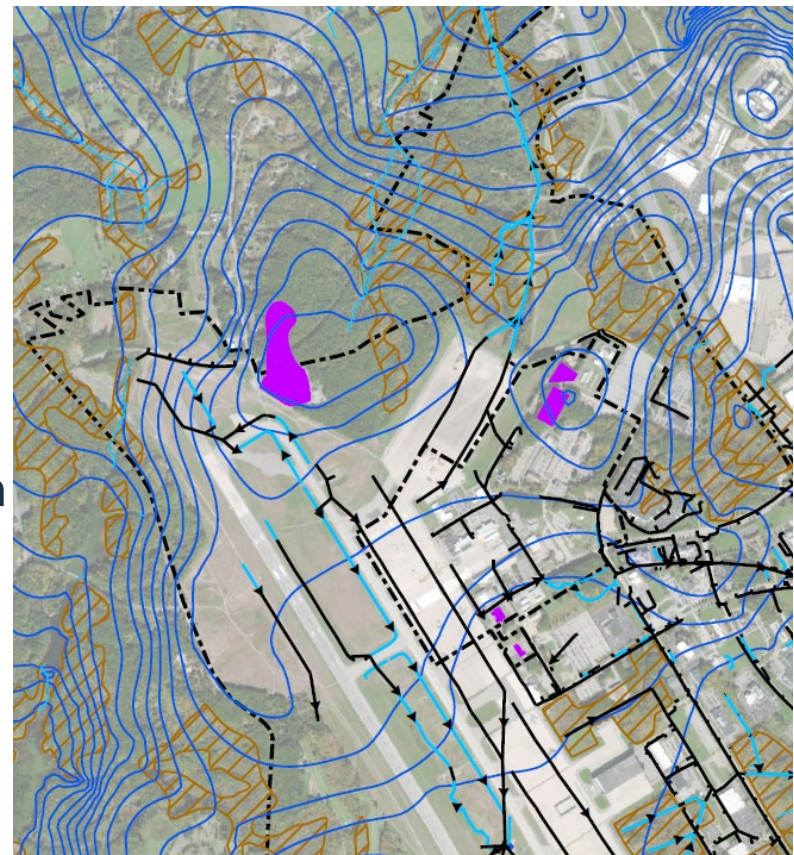
Draft RI Report scheduled August 2022

➤ Provide briefing on fall sampling plan at next RAB



RI Sample Location Figures

- ❖ Demo layered figures
- ❖ Questions on sampling
- Overview of planned investigation:
 - Investigate existing and potential source areas
 - Identify and sample migration pathways including springs, surface water, groundwater and storm sewers
 - Evaluate potential receptors to contamination



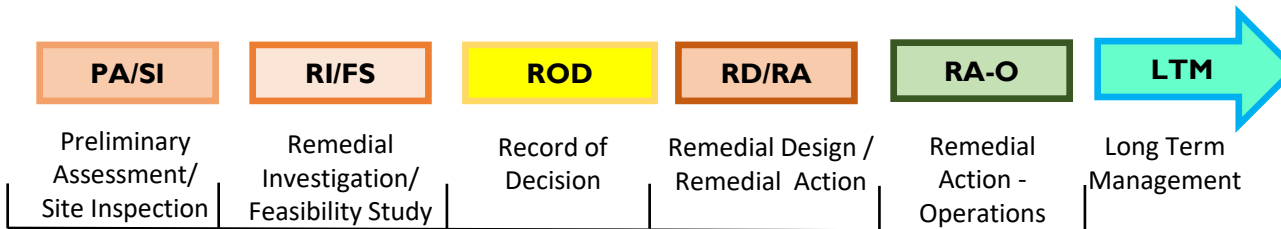


CERCLA Overview

Conceptual Overview of the Process



CERCLA Nomenclature used to describe the Conceptual Process Above



Field Work Begins Spring 2021

Comprehensive Environmental Response, Compensation, and Liability Act (CERCLA)



RI and Feasibility Study - Purpose

Remedial Investigation

- Characterize site conditions, determine the nature of the waste
- Assess risk to human health and the environment
- Conduct treatability testing to support potential remedy options
- Start considering potential applicable or relevant and appropriate requirements (ARARs)



Feasibility Study

- Mechanism for the development, screening, and detailed evaluation of alternative remedial actions
- Fine-tune the list of potential ARARs and use them in the evaluation of remedial alternatives.



When are ARARs considered?



Applicable or relevant and appropriate requirements (ARARs)

The RI Report

- An initial summary of **potential** ARARs
 - ✓ Note: Rationale for RI GW investigation based on NH AGQS
- Regulatory input requested at this phase

The FS Report – Performed after the RI/risk assessments

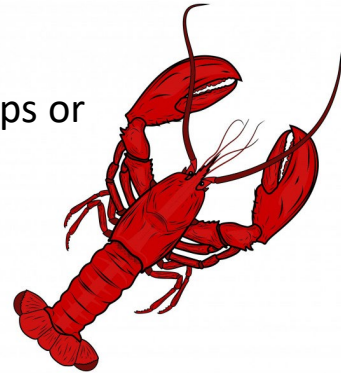
- Potential ARARs are fine-tuned
- Potential ARARs are used to develop Remedial Action Objectives (RAOs) and remedial alternatives
- On-site remedial actions selected in a ROD must attain those ARARs that are identified at the time of ROD signature or provide grounds for invoking a waiver



Remedial Investigation – Biota Sampling Update

Biota Sampling Progress Update

- Garden sampling plan is in development
- Sampling planned for this summer
 - Sample locations identified based on:
 - PFOS/PFOA/PFBS detected in water used to irrigate edible crops or water animals for consumption
- Commercial lobster fishing - identified as relevant based on discussion with NH Fish & Game
- Thresholds to identify whether additional sampling is needed for bivalves and game are still being developed





Open Discussion

- **Opportunity for RAB members to discuss additional topics**

City of Portsmouth Update



Pease Restoration Advisory Board

June 9, 2021



Public Comment

Goal: Provide opportunity for members of the public to comment.

Process:

- Public members e-mail Linda Geissinger by 5:20 PM ET if you would like to make public comment:
linda.geissinger@us.af.mil
- 3 min limit per speaker.
- Speakers will be notified when they have 30 seconds remaining & at the 3 min mark.



RAB Meeting Recap

- **Meeting Recap**
- **Action Items**
- **Next Steps**
- **Next meeting**



Adjournment

